



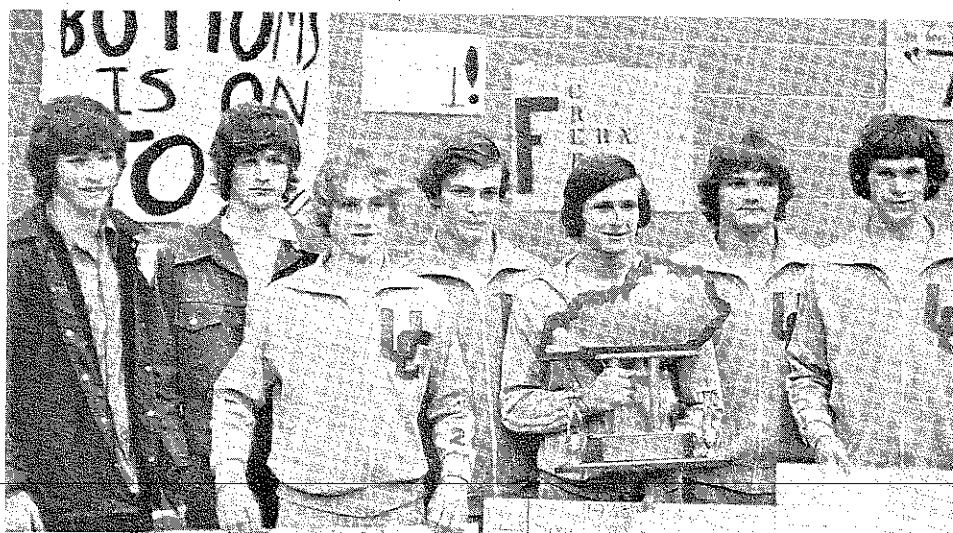
THE KENTUCKY



High School Athlete



UNION COUNTY HIGH SCHOOL
1976 CHAMPIONSHIP WRESTLING TEAM



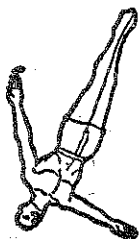
(Left to Right) Gerald Hines, Tim Ervin, Tim Thomas, Allen White, Paul Burgess, Bill Okeson, Eddie Sheffer.



Member Of National Federation of State High School Association

Official Organ of the
KENTUCKY HIGH SCHOOL ATHLETIC ASSOCIATION

MARCH 1976



HENRY CLAY H. S. GIRLS' GYMNASTICS TEAM
1976 K.H.S.A.A. STATE CHAMPION



(Left to Right) Front Row: Pat Ray, Lynn Wilkins, Tammy Kelso, Suzanne Scruggins, Debby Cornett, Kay Polites. Second Row: Mgr Carol Campbell, Robin Tucker, Tammy Cornett, Nora Geoghan, Mgr. Laurel Heitel, Libby McDade.

INDIVIDUAL CHAMPIONSHIP WINNERS
STATE WRESTLING TOURNAMENT



(Left to Right) Front Row: 98—Bernie McCamish, North Hardin; 105—Tim Thomas, Union County; 112—Paul Burgess, Union County; 119—John Barker, Newport Catholic; 126—Wayne Mackey, Ballard; 132—Bruce Gilliland, Fern Creek. Second Row: 138—Eddie Sheefer, Union County; 145—Frank Culberson, Trinity; 155—Gary Mendal, Westport; 167—Kurt Schustermann, Ballard; 185—Greg Holzknect, Waggener; Heavyweight—John Sawaya, Fern Creek.

STATE WRESTLING TEAM RESULTS

The Atherton High School, Louisville, was the site for the State Wrestling Tournament held on February 13-14, 1976. Orville Williams of the Seneca High School was manager and Mr. Gene Minton of the Atherton High School was assistant manager of the tournament. The team results are as follows:

1. Union County, 94½; 2. Fern Creek, 78½; 3. Ballard, 59; 4. Newport Catholic, 54; 5. Trinity, 45½; 6. Woodford County, 43; 7. St. Xavier, 43; 8. Campbell County, 41; 9. Waggener, 31; 10. North Hardin, 33½; 11. Jeffersontown, 28; 12. Henderson County, 24½; 13. Simon Kenton, 21½; 14. Westport, 18½; 15. Hopkinsville, 18; 16. Caldwell County, 18; 17. Frankfort, 15; 18. Hancock County, 14; 19. Oldham County; 20. Seneca, 13½; 21. Belfry, 11; 22. Fort Campbell, 11; 23. Pleasure Ridge Park, 9½; 24. Greenville, 9; 25. Owensboro, 8; 26. West Hardin, 8; 27. Lafayette, 7; 28. Western, 6; 29. Doss, 5½; 30. Male, 5½; 31. Danville, 4; 32. Durrett, 4; 33. Franklin County, 4; 34. Moore, 4; 35. Trigg County, 3; 36. Boone County, 2½; 37. Eastern, 2½; 38. Valley, 2½; 39. Newport, 2; 40. Conner, 1; 41. East Hardin, 1.

BASEBALL**Paducah Tilghman Region**

Carlisle County District — Ballard Memorial, Carlisle County, Fulton County, Hickman County
Caldwell County District — Caldwell County, Crittenden County, Livingston Central, Lyon County

Lone Oak District — Heath, Lone Oak, Paducah Tilghman, Reidland, St. Mary

Calloway County Region

Mayfield District — Farmington, Lowes, Mayfield, Wingo

Marshall County District — Calloway County, Cuba, Marshall County, Murray

Christian County District — Christian County, Ft. Campbell, Hopkinsville, Trigg County

Owensboro Region

Owensboro District — Apollo, Daviess County, Owensboro, Owensboro Catholic

Central City District — Bremen, Central City, Drakesboro, Graham, Greenville, Hughes-Kirk, Muhlenberg

Ohio County District — Breckinridge County, Fordsville, Frederick Fraize, Hancock County, Ohio County, St. Romuald, Trinity (Whitesville)

Madisonville Region

Henderson County District — Henderson, Henderson County, Providence, Union County, Webster County

Madisonville N. Hopkins District — Dawson Springs, McLean County, Madisonville-North Hopkins, South Hopkins, West Hopkins

Edmonson County District — Butler County, Edmonson County, Grayson County

Bowling Green Region

Auburn District — Adairville, Auburn, Chandlers Chapel, Lewisburg, Olmstead, Russellville, Todd County Central

Bowling Green District — Bowling Green, Franklin Simpson, Warren Central, Warren East

Glasgow District — Allen County, Barren County, Glasgow

Metcalf County District — Clinton County,

Cumberland County, Gamaliel, Metcalfe County, Tompkinsville

Elizabethtown Region

Elizabethtown District — East Hardin, Elizabethtown, Fort Knox, Meade County, North Hardin, West Hardin

Caverna District — Caverna, Green County, Hart County, LaRue County

Bullitt Central District — Bardstown, Bethlehem, Bullitt Central, Nelson County, Washington County

Campbellsville District — Adair County, Campbellsville, Marion County, Taylor County

Oldham County Region

Shelby County District — Oldham County, Shelby County, Taylorsville

Franklin County District — Frankfort, Franklin County, Scott County

Harrison County District — Bourbon County, Harrison County, Millersburg Military Institute, Nicholas County, Paris

Un. of Ky. District — Bryan Station, Henry Clay, Lafayette, Sayre, Tates Creek

Madison Central Region

Lexington Catholic District — Anderson County, Harrodsburg, Lexington Catholic, Mercer County, Woodford County

Boyle County District — Boyle County, Danville, Garrard County, Jessamine County

Madison Central District — Berea, Estill County, Madison, Madison Central, Model

Russell County District — Casey County, Lincoln County, Russell County

Paul G. Blazer Region

Paul Blazer District — Boyd County, Holy Family, Louisa, Paul Blazer

Russell District — Fairview, Greenup County, Raceland, Russell

Bath County District — Bath County, George R. Clark, Menifee County, Mt. Sterling, Montgomery County

Johns Creek District — Belfry, Elkhorn City, Feds Creek, Johns Creek, Phelps

University Breckinridge Region

Rowan County District — East Carter, Rowan County, University Breckinridge, West Carter

Johnson Central District — Johnson Central, Morgan County, Paintsville, Salyersville, Sheldon Clark

McDowell District — Allen Central, Betsy Layne, McDowell, Prestonsburg, Wheelwright

Pikeville District — Dorton, Millard, Mullins, Pikeville, Virgie

Somerset Region

Somerset District — Burnside, Eubank, Nancy, Pulaski County, Somerset

Monticello District — McCreary County, Monticello, Pine Knot, Wayne County

Jenkins District — Breathitt County, Fleming Neon, Jenkins, Knott County, Letcher County, Riverside Christian, Whitesburg

M. C. Napier District — Buckhorn, Combs Memorial, Hazard, Leslie County, M. C. Napier

Laurel County Region

Laurel County District — Clay County, Jackson County, Laurel County, Oneida Institute, Rockcastle County

Cawood District — Cawood, Cumberland, Evarts, Harlan, Lynch

Powell County District — Hazel Green, Lee

1976 STATE TOURNAMENT TOP TEAMS

1.	Union County (8)	94 $\frac{1}{2}$
2.	Fern Creek (7)	78 $\frac{1}{2}$
3.	Ballard (7)	59
4.	Newport Catholic (9)	54
5.	Trinity (7)	45 $\frac{1}{2}$
6.	Woodford County (8)	43
6.	St. X. (7)	43
8.	Campbell County (6)	41
9.	Waggoner (2)	34
10.	North Hardin (9)	33 $\frac{1}{2}$
11.	Jeffersonton (2)	28
12.	Henderson County (4)	24 $\frac{1}{2}$
13.	Simon Kenton (3)	21 $\frac{1}{2}$
14.	Westport (2)	18 $\frac{1}{2}$
15.	Hopkinsville (4)	18
15.	Caldwell County (2)	18
17.	Frankfort (2)	15
18.	Hancock County (1)	14
19.	Oldham County (7)	13 $\frac{1}{2}$
19.	Seneca (3)	13 $\frac{1}{2}$

1975 STATE TOURNAMENT

59 TEAMS

	TEAM	1ST ROUND	Q.F.	TOT.	S.F.	TOT.	W.B.	TOT.	CON.	TOT.	FIN.	TOT.
3 RD	Ballard	18½	6	24½	18	42½	6	52½		52½	6½	59
	Belfry	2	2	4			5	9	2	11		11
	Boone Co.	2½		2½				2½				2½
	Boyle Co.											0
	Bowling Green											0
	Bryan Station											0
	Callwell Co.	7	2	9	9			18		18	0	18
	Campbell Co.	13	6	19	18	37	3	41		41	0	41
	Christian Co.											0
	Conner							1				1
4) T 30	Danville	4		4				4				4
	Doss	4		4			1½	5½				5½
	Dunnett	4		4				4				4
	East Hardin						1	1				1
	Eastern	2½		2½				2½				2½
	Fairdale											0
2 ND	Fern Creek	20½	12	32½	28	60½	4½ 3½	68½	2	70½	8	78½
	Fort Campbell											
	Fort Campbell	4½		4½			1½ 3	9	2	11		11
	Fort Knox											0
	Frankfort	6	4	10			5	15				15
	Franklin Co.	2	2	4				4				4
	Franklin Simpson											0
	Greenville	4	2	6			3	9				9
	Hancock Co.	3	2	5	9	14		14		14	0	14
	Harrison Co.											0
	Henderson Co.	6½	2½	9	9½	18½	3 3	24½		24½	0	24½

1976 STATE TOURNAMENT

	TEAM	1ST ROUND	G.F.	TOT.	S.F.	TOT.	W.B.	TOT.	CON.	TOT.	FIN.	TOT.
	Henry Clay											0
	Holmes											0
	Hopkinsville	8		8			3	14	4	18		18
	Jeffersonton	6	4	10	18			28		28	0	28
	Jessamine Co.											0
	Johnson Central											0
	KSB											0
	Lafayette	2	2	4			3	7				7
	Male	4		4			1 1/2	5 1/2				5 1/2
	Marshall Co.											0
	Moore	2	2	4				4				4
4TH	Newport Catholic	19	8	27	9	36	3	45	6	51	3	54
	Newport	2		2				2				2
	North Hardin	15	4 1/2	19 1/2	11	30 1/2		30 1/2		30 1/2	3	33 1/2
	Oldham Co.	9 1/2	0	9 1/2			4	13 1/2				13 1/2
	Owensboro	8		8				8				8
	Paducah											0
	Paintsville											0
	PRP	4	2	6			3 1/2	9 1/2				9 1/2
	Seneca	7 1/2		7 1/2			3	13 1/2				13 1/2
	Simon Kenton	8	2	10			6 1/2	17 1/2	4	21 1/2		21 1/2
	St. X	20	8	28	9	37	3	41	2	43	0	43
	Tales Creek											0
	Trigg Co.						3	3				3
5TH	Trinity	10 1/2	6 1/2	17	9 1/2	26 1/2	4 1/2	40 1/2	2	42 1/2	3	45
1st	Union Co.	22 1/2	14 1/2	37	45 1/2	82 1/2	9 1/2	83 1/2		83 1/2	11	94
	Valley	2 1/2		2 1/2				2 1/2				2 1/2

1976 STATE TOURNAMENT.

TEAM	1ST ROUND	Q.F.	TOT.	S.F.	TOT.	W.B.	TOT.	CON.	TOT.	FIN.	TOT.
Waggoner	6	6½	12½	18½			31		31	3	34
Webster Co.											0
West Kardin	6	2	8				8				8
Western	4	2	6				6				6
Westport	4	2	6	9½			15½		15½	3	18½
Woodford Co.	18½	8	26½			3 9½	39	4	43		43

COLVIN-J'TOWN

KELTY-TRINITY

COLVIN-J'TOWN

7-2

COLVIN-J'TOWN

7-5

SHAMELL-FT. KNOX

FRANK-HOPVILLE

14-8

FRANK-HOPVILLE

GOOD-BRYAN ST.

UEBEL-N.C.

4-4 D.T. 2-2 R.D.

UEBEL-N.C.

FALIN-DOSS

COTTON-W.C.

PIN

COTTON-W.C.

SEGER-ST. X.

SPINE-F.C.

9-5

SPINE-F.C.

RICHARDSON-J.C.

M^cCAMISH-N.H.

15-2

M^cCAMISH-N.H.

SALYERS-BOONE

SALYERS-BOONE

12-1

COLE-UNION

CIARAVINO-LAF

DEEMING-PRP

PIN

DEEMING-PRP

KELTY-TRINITY

FRANK-HOPKINS

KELTY-TRINITY

COTTON-W.C.

7-0

COTTON-W.C.

13-5

CONSOLATION

RICHARDSON-JESS. CO.

SPINE-F.C.

SPINE-F.C.

DEEMING-PRP

FORFEIT

DEEMING-PRP

8-0

COTTON-W.C.

7-0

3rd PLACE

THOMAS-UNION

STEWART-PRP

THOMAS-UNION

PIN

HILLERICK-F.C.

HILLERICK-F.C.

12-1

KINDER-TATES CO.

COLETTI-N.C.

COLETTI-N.C.

10-0

RICHARDSON-J.C.

CHANCELLOR-HENDERSON

STONE-DURRETT

PIN

STONE-DURRETT

MODMAN-DWENBERG

MODMAN-DWENBERG

PIN

GAGEL-HENRY CO.

TOWNLEY-KSB

HILL-W.C.

PIN

HILL-W.C.

COLE-FAIRDALE

BANKEMPER-CAMP. CO.

PIN

BANKEMPER-CAMP. CO.

HORN-HOPVILLE

RAY-BALLARD

PIN

RAY-BALLARD

THOMAS-UNION

PIN

THOMAS-UNION

17-7

COLETTI-N.C.

9-8

THOMAS-UNION

CHAMPION 4-2

HILL-W.C.

13-10

BANKEMPER-CAMP. CO.

4-1

BANKEMPER-CAMP. CO.

6-5

STEWART-PRP

HILLERICK-F.C.

HILLERICK-F.C.

COLETTI-N.C.

10-0

COLETTI-N.C.

6-3

CONSOLATION

COLE-FAIRDALE

RAY-BALLARD

RAY-BALLARD

HILL-W.C.

FORFEIT

RAY-BALLARD

7-4

COLETTI-N.C.

PIN

3rd PLACE

98

Class

105

Class

POSTON - N.C.

P'POOL - CALD. CO.

P'POOL - CALD. CO.
PIN

P'POOL - CALDWELL CO. ✓

112

Class

EDWARDS - HARR. CO.

RUSSELL - DOSS
PIN

4-1

RUSSELL - DOSS

ANTIONETTI - N.H.

BELL - SENECA
8-3

SMITH - W.C.

WILLEN - EASTERN

SMITH - W.C.

SMITH - W.C.
9-0

5-0

KURTZ - F.C.

DANKINS - SIM. KEN.

KURTZ - F.C.
PIN

KURTZ - F.C. ✓

DUNCAN - WESTERN

BLOCK - ST. X.

BLOCK - ST. X.
6-3

PIN

MADISON - TATES CO.

REINERT - OLDHAM

REINERT - OLDHAM
13-2

BURGESS - UNION

SHAMELL - FT. KNOX

BURGESS - UNION

BURGESS - UNION
PIN

11-2

P'POOL - CALDWELL CO.

8-2

BURGESS - UNION

CHAMPION 6-1

BURGESS - UNION ✓

14-8

CONSOLATION

POSTON - N.C.

RUSSELL - DOSS

RUSSELL - DOSS

SMITH - W.C.
10-1

SMITH - W.C.

8-7

SHAMELL - FT. KNOX

REINERT - OLDHAM

REINERT - OLDHAM
PIN

KURTZ - F.C.

KURTZ - F.C.

KURTZ - F.C.

5-1
3rd PLACE

11-3

LUNSFORD - TATES CO.

POTOMAC - W.C.

BATTING - W.C.
PIN

ERVIN - UNION ✓

PAYTON - BALLARD

ERVIN - UNION

ERVIN - UNION
PIN

11-7

BARKER - N.C.

LANCASTER - BOWLING GR.

BARKER - N.C.
PIN

BARKER - N.C.

BARKER - N.C.

4-1

RICHARDSON - SENECA

MCGREW - DOSS

RICHARDSON - SENECA
14-0

4-1

MORSE - N.H.

HELLUMS - FT. CAMP

MORSE - N.H.
14-0

MORSE - N.H. ✓

SPARKS - HENRY CLAY

MORANLY - DANVILLE

MORANLY - DANVILLE
PIN 2:50

9-5

JEWELL - J'TOWN

TERRY - PRP

JEWELL - J'TOWN
PIN

JEWELL - J'TOWN

JEWELL - J'TOWN ✓

10-4

BRADFORD - NEWPORT

DAY - TRINITY

DAY - TRINITY
6-4

11-7

BARKER - N.C.

CHAMPION 2-1

119

Class

LANCASTER - BOWLING GR.

RICHARDSON - SENECA

RICHARDSON - SENECA
FORGET

ERVIN - UNION

RICHARDSON - SENECA

4-4 O.T. 0-2 R.D.

CONSOLATION

TERRY - PRP

DAY - TRINITY

DAY - TRINITY
3-2

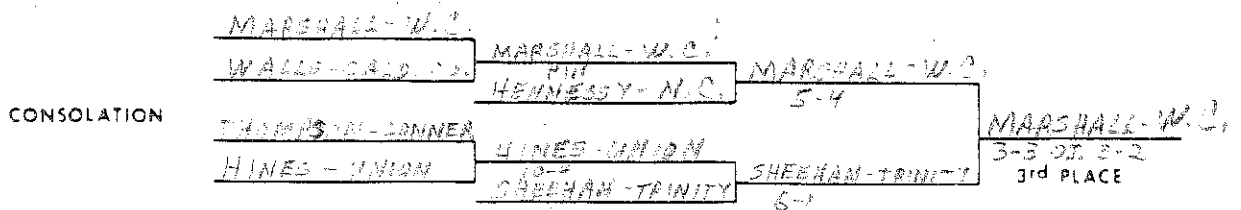
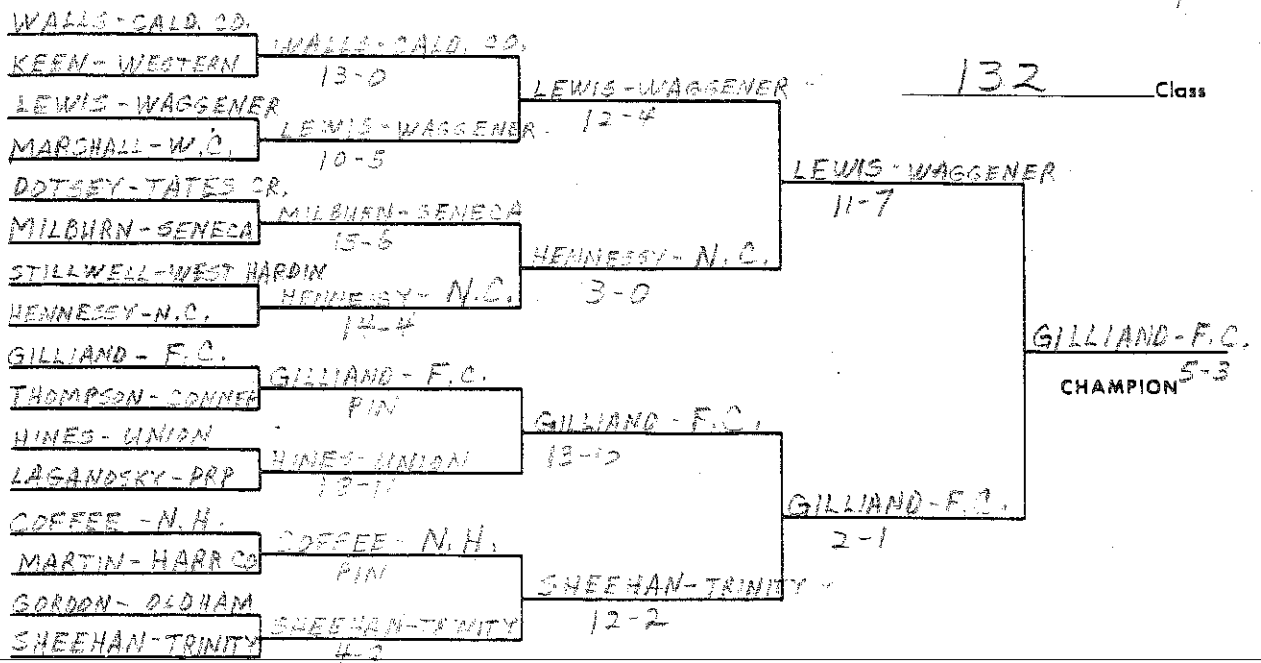
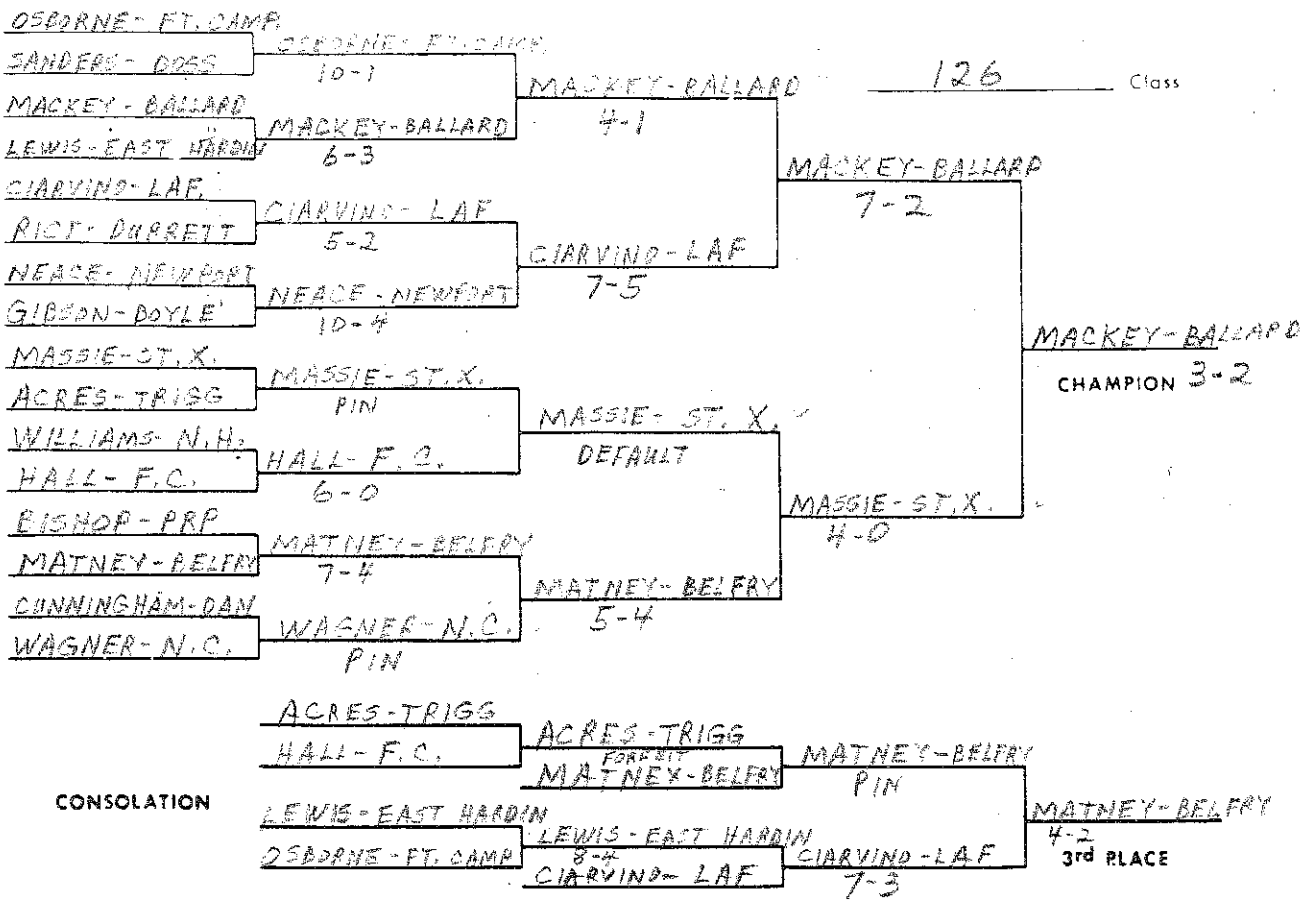
MORSE - N.H.

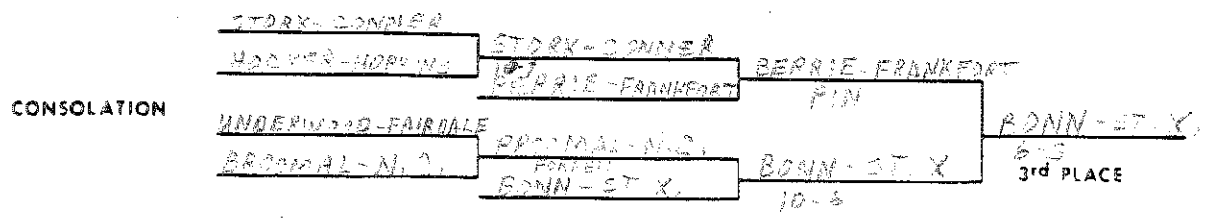
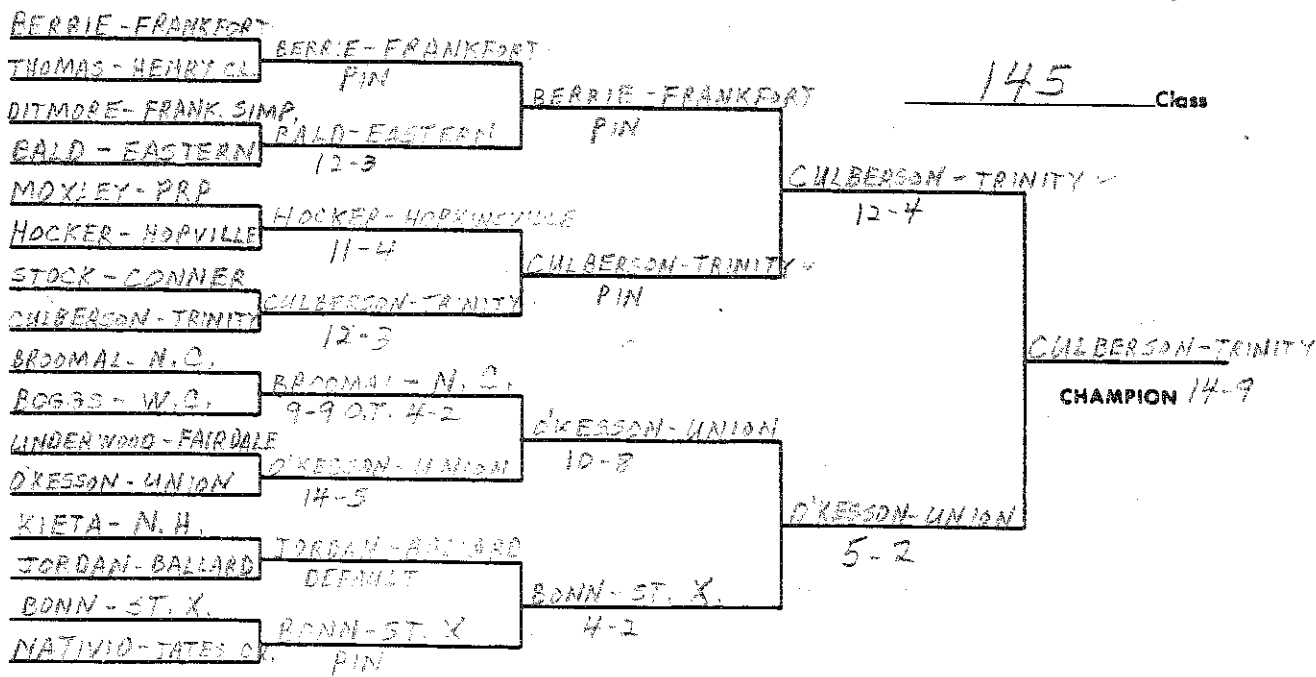
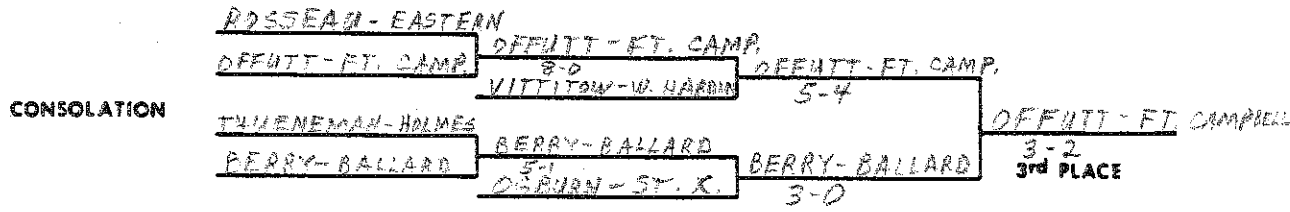
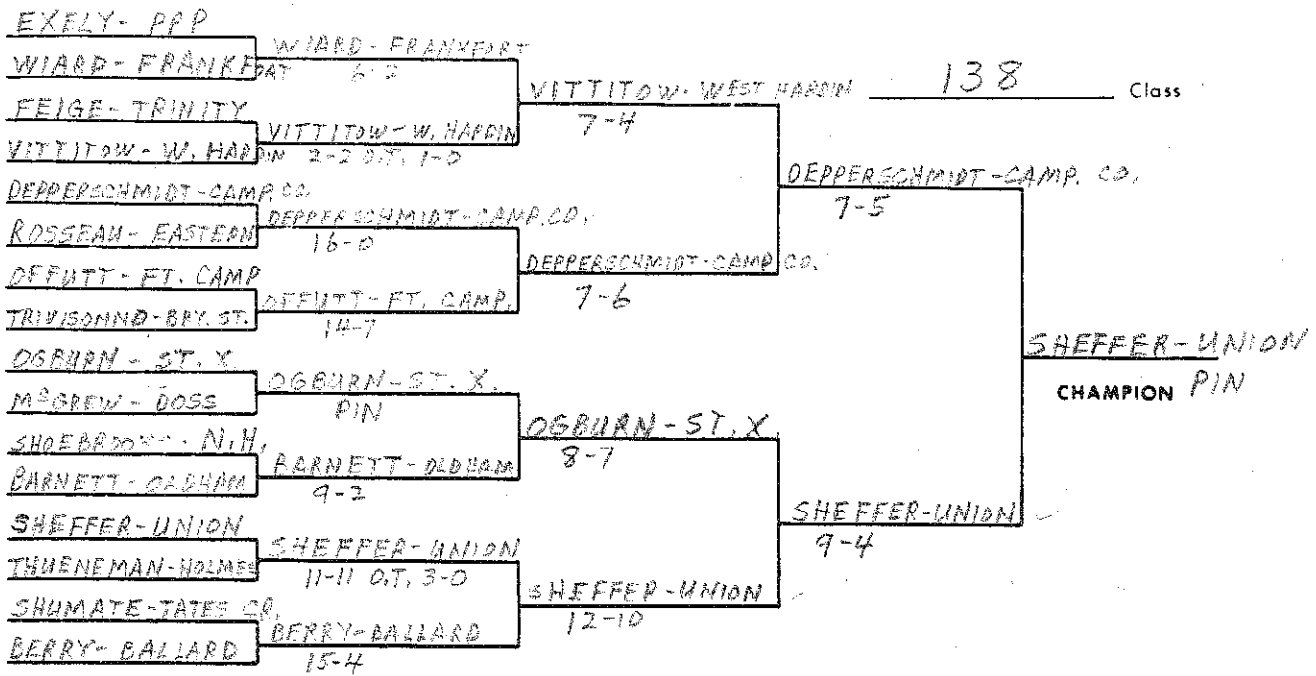
DAY - TRINITY

12-3

DAY - TRINITY

7-2
3rd PLACE





HAYDEN-FRANKLIN CO.

GOOD-CAMP, CO.

SEILER-PRP

DRAKE-N.H.

MENDEL-WESTPORT

SPEARS-PAINTSVILLE

MOSLEY-DURRETT

ALEXANDER-HOPKINS

RUSCHEL-N.C.

MILLER-BALLARD

CONREY-OLDHAM

BRANSON-TATES

SCHROEDERS-TRINITY

WHITE-UNION

GRAY-HENDERSON

MITORAJ-VALLEY

HAYDEN-FRANKLIN CO.

3-2

DRAKE-N.H.

12-3

MENDEL-WESTPORT

PIN

ALEXANDER-HOPKINS

PIN

MILLER-BALLARD

4-4 O.T. 4-3

CONREY-OLDHAM

19-7

WHITE-UNION

PIN

GRAY-HENDERSON

12-3

HAYDEN-FRANKLIN CO.

4-0

MENDEL-WESTPORT

7-3

MILLER-BALLARD

8-2

WHITE-UNION

7-1

155

Class

MENDEL-WESTPORT

13-4

MENDEL-WESTPORT

MENDEL-WESTPORT

CHAMPION 10-8

CONSOLATION

SPEARS-PAINTSVILLE

ALEXANDER-HOP.

SCHROEDERS-TRINITY

GRAY-HENDERSON

ALEXANDER-HOP.

HAYDEN-FRANKLIN CO.

GRAY-HENDERSON

MILLER-BALLARD

ALEXANDER-HOP.

CO. 10-4

GRAY-HENDERSON

6-5

ALEXANDER-HOP.

PIN

3rd PLACE

TUFFLAND-BELFRY

WEEDMAN-YALLEY

HALFACRE-WESTPORT

NEWMAN-GREENVILLE

CLARK-OLDHAM

HEAVRIN-ST. X.

HOLTZ-CAMP. CO.

SKAGGS-HENDERSON

POWELL-SIM. KENT

VANHOESE-W.C.

HOLT-N.W.

HICKS-PRP

BRITT-MALE

SOYK-FT. CAMP

TRIMBLE-JOHN. CENT.

SCHUSTERMAN-BAL

WEEDMAN-YALLEY

14-4

NEWMAN-GREENVILLE

PIN

HEAVRIN-ST. X.

PIN

SKAGGS-HENDERSON

PIN

POWELL-SIMON KENTON

PIN

HOLT-N.H.

20-11

BRITT-MALE

PIN

SCHUSTERMAN-BALLARD

PIN

NEWMAN-GREENVILLE

9-3

SKAGGS-HENDERSON

15-7

POWELL-SIMON KENTON

4-1

SCHUSTERMAN-BALLARD

5-2

167

Class

SKAGGS-HENDERSON

18-7

SCHUSTERMAN-BALLARD

CHAMPION 12-1

CONSOLATION

HOLTZ-CAMP. CO.

HEAVRIN-ST. X.

TRIMBLE-JOHN. CENT.

BRITT-MALE

HEAVRIN-ST. X.

NEWMAN-GREENVILLE

NEWMAN-GREENVILLE

POWELL-SIM. KENT

NEWMAN-GREENVILLE

11-10

POWELL-SIMON KENTON

11-4

POWELL-SIMON KENTON

6-2

POWELL-SIMON KENTON

11-4

3rd PLACE

